

3-WAY BALL VALVE TYPE 23H 25mm - 40mm(1inch - 1 1/2inch)

FEATURES

Horizontal Model

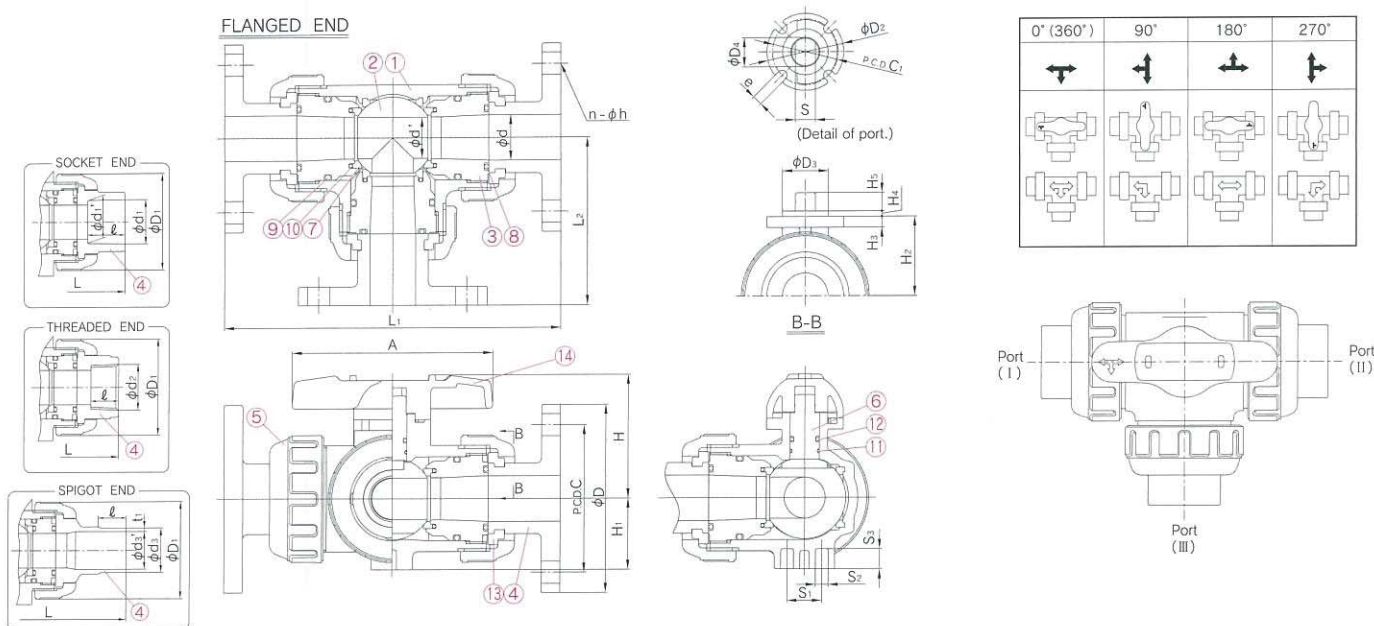
The 3-WAY BALL VALVE TYPE 23H is horizontal mode(T port).

Same Features as TYPE23

- a) Compact and Economic
- b) Reversible Flow Direction
- c) Equipped ISO Mounting Flange
- d) Interchangeable with Ball Valve Type21



DIMENSION



MATERIAL AND WORKING TEMPERATURE

Body Material	Working Temperature °C (-F)	Max. Working Pressure(at R.T.) MPa[kgf/cm ²][PSI]	End Connectors			
			Socket End	Threaded End	Flanged End	Spigot End
Polypropylene(PP)	-20 - 80(-5 - 175)	1.0 [10.2] [150]	○※	○	○	○

* PP 3-WAY BALL VALVES of the Socket End are welded valves.

Note : 1. There is a dead space in a ball valve. Volatile liquids, such as a hydrogen peroxide (H₂O₂) and Sodium hypochlorite (NaClO) may vaporize in the dead space, thus causing an abnormal pressure increase in the valve. (Important: Gas is compressible. Thus if its pressure rises abnormally, the valve can burst ejecting dangerous fragments.

PARTS & MATERIALS

No.	DESCRIPTION	Pcs.	MATERIAL	No.	DESCRIPTION	Pcs.	MATERIAL
①	BODY	1	PP	⑧	O-RING(A)	3	EPDM,FKM,others
②	BALL	1	PP (T Port)	⑨	O-RING(B)	3	EPDM,FKM,others
③	CARRIER	3	PP	⑩	O-RING(C)	3	EPDM,FKM,others
④	END CONNECTOR	3	PP	⑪	O-RING(D)	1	EPDM,FKM,others
⑤	UNION NUT	3	PPG	⑫	O-RING(E)	1	EPDM,FKM,others
⑥	STEM	1	PP	⑬	STOP RING	3	PVDF(Used for Flanged End)
⑦	SEAT	4	PTFE	⑭	HANDLE	1	ABS

DIMENSIONS TABLE

JIS		Unit:mm															
Nominal Size		Flanged End					Socket End					Threaded End					
		JIS PN10				t	L ₁	L ₂	d ₁	d ₁ '	ℓ	L ₁	L ₂	d ₂	ℓ	L ₁	L ₂
mm	inch	D	C	n	h	t	L ₁	L ₂	d ₁	d ₁ '	ℓ	L ₁	L ₂	d ₂	ℓ	L ₁	L ₂
25	1	125	90	4	19	14	216	108	33.0	32.0	25	170	85	Rc 1	20	159	79.5
32	1 1/4	135	100	4	19	16	260	130	—	—	—	—	—	Rc 1 1/4	22	208	104
40	1 1/2	140	105	4	19	16	260	130	47.0	46.0	28	219	109.5	Rc 1 1/2	25	208	104

Nominal Size	d	d'	D ₁	D ₂	D ₃	D ₄	C ₁	H	H ₁	H ₂	H ₃	H ₄	H ₅	A	S	S ₁	S ₂	S ₃	e	
mm	inch																			
25	1	25	22	70	42	25	15	36	68	39	43.5	6	3	10	110	11	19	7.3	11	5.5
32	1 1/4	40	34	100	57	35	23	50	89	55	61	10	3	12	131	18	30	9	15	6.5
40	1 1/2	40	34	100	57	35	23	50	89	55	61	10	3	12	131	18	30	9	15	6.5

DIN		Unit:mm																				
Nominal Size		Flanged End					Socket End					Threaded End				Spigot End						
		DIN PN10				t	L ₁	L ₂	d ₁	d ₁ '	ℓ	L ₁	L ₂	d ₂	ℓ	L ₁	L ₂	d ₃	ℓ	t	L ₁	L ₂
mm	inch	D	C	n	h	t	L ₁	L ₂	d ₁	d ₁ '	ℓ	L ₁	L ₂	d ₂	ℓ	L ₁	L ₂	d ₃	ℓ	t	L ₁	L ₂
25	1	115	85	4	14	14	189	94.5	31.5	31.3	18	152	76	Rp 1	20	159	79.5	32	22.5	3.0	183	91.5
32	1 1/4	140	100	4	16	16	260	130	39.45	39.2	20.5	197	98.5	Rp 1 1/4	22	208	104	—	—	—	—	—
40	1 1/2	150	110	4	16	16	248	124	49.45	49.2	23.5	197	98.5	Rp 1 1/2	25	208	104	50	32	4.6	242	121

Nominal Size	d	d'	D ₁	D ₂	D ₃	D ₄	C ₁	H	H ₁	H ₂	H ₃	H ₄	H ₅	A	S	S ₁	S ₂	S ₃	e	
mm	inch																			
25	1	25	22	70	42	25	15	36	68	39	43.5	6	3	10	110	11	19	7.3	11	5.5
32	1 1/4	40	34	100	57	35	23	50	89	55	61	10	3	12	131	18	30	9	15	6.5
40	1 1/2	40	34	100	57	35	23	50	89	55	61	10	3	12	131	18	30	9	15	6.5

ANSI		Unit:mm															
Nominal Size		Flanged End					Socket End					Threaded End					
		ANSI Class150				t	L ₁	L ₂	d ₁	ℓ	L ₁	L ₂	d ₂	ℓ	L ₁	L ₂	
mm	inch	D	C	n	h	t	L ₁	L ₂	d ₁	ℓ	L ₁	L ₂	d ₂	ℓ	L ₁	L ₂	
25	1	4.25	3.13	4	0.62	0.55	8.50	4.25	1.30	1.13	6.77	3.39	1-11 1/2NPT	0.79	6.26	3.13	
32	1 1/4	4.62	3.50	4	0.62	0.63	10.24	5.12	1.65	1.25	8.74	4.37	1 1/4-11 1/2NPT	0.87	8.19	4.09	
40	1 1/2	5.00	3.88	4	0.62	0.63	10.24	5.12	1.89	1.37	8.94	4.47	1 1/2-11 1/2NPT	0.98	8.19	4.09	

Nominal Size	d	d'	D ₁	D ₂	D ₃	D ₄	C ₁	H	H ₁	H ₂	H ₃	H ₄	H ₅	A	S	S ₁	S ₂	S ₃	e	
mm	inch																			
25	1	0.98	0.87	2.76	1.65	0.98	0.59	1.42	2.68	1.54	1.71	0.24	0.12	0.39	4.33	0.43	0.75	0.29	0.43	0.22
32	1 1/4	1.57	1.34	3.94	2.24	1.38	0.91	1.97	3.50	2.17	2.40	0.39	0.12	0.47	5.16	0.71	1.18	0.35	0.59	0.26
40	1 1/2	1.57	1.34	3.94	2.24	1.38	0.91	1.97	3.50	2.17	2.40	0.39	0.12	0.47	5.16	0.71	1.18	0.35	0.59	0.26