

DIAPHRAGM VALVE
 BALL VALVE
 BUTTERFLY VALVE
 SWING CHECK VALVE
 BALL CHECK BALL FOOT VALVE
 STOP VALVE
 GAUGE VALVE
 GATE VALVE
 AUTOMATIC WATER FEEDING VALVE
 ROTARY ANGLE VALVE
 ALFALFA VALVE
 CONSTANT FLOW VALVE
 NEEDLE VALVE
 Y-SEDIMENT STRAINER
 AIR RELEASE VALVE

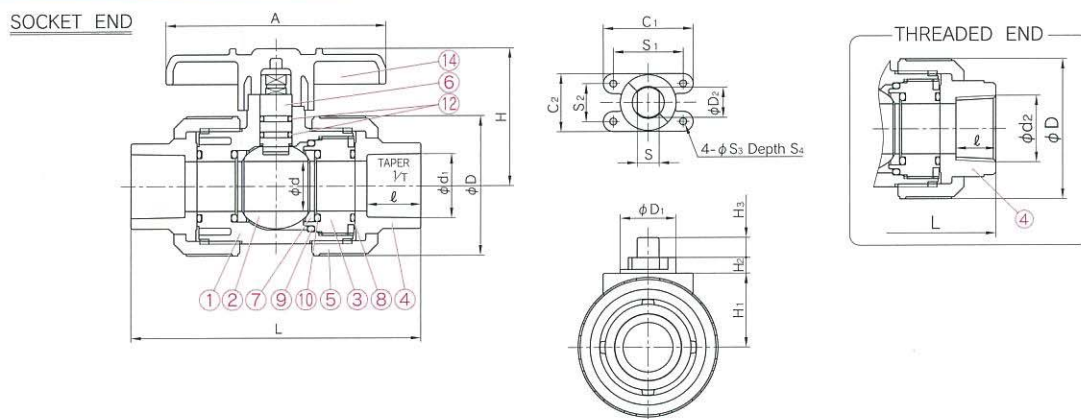
WATER BV 15mm - 50mm (1/2 inch - 2 inch)



FEATURES

- Most suitable valve for water**
 Water BV can be used for water, seawater and therefore have reasonable price.
 (This valve is not recommended for chemical fluid.)
- Easy to Be Automated (No Modification Required)**
 Featuring a new integral molded top flange. The WATER BV can easily be converted from the manual to automatic without replacing the body.
- Double-O-ring**
 The stem uses a double-O-ring, sealing arrangement improving durability sealing performance. The upper O-ring groove is deeper than the lower O-ring groove. Because of this design, the stem would break first at the upper O-ring groove, acting as a back up seal.
- Multi Functional Handle**
 Removing the handle and placing the raised lugs into the carrier allow for easy disassembly of the valve.

DIMENSION



MATERIAL AND WORKING TEMPERATURE

Body Material	Working Temperature °C (°F)	Max. Working Pressure(at R.T.) MPa[kgf/cm ²][PSI]	End Connectors	
			Socket End	Threaded End
Unplasticized Polyvinyl Chloride(PVC)	0 - 50(30 - 120)	1.0{10.2}[150]	○	○

PARTS & MATERIALS

No.	DESCRIPTION	Pcs.	MATERIAL	No.	DESCRIPTION	Pcs.	MATERIAL
①	BODY	1	PVC	⑦	SEAT	2	PTFE
②	BALL	1	PVC	⑧	O-RING(A)	2	EPDM
③	CARRIER	1	PVC	⑨	O-RING(B)	1	EPDM
④	END CONNECTOR	2	PVC	⑩	O-RING(C)	2	EPDM
⑤	UNION NUT	2	PVC	⑫	O-RING(E)	2	EPDM
⑥	STEM	1	PVC	⑬	HANDLE	1	ABS

DIMENSIONS TABLE

JIS		Unit:mm																						
Nominal Size	Socket End				Threaded End				d	D	D ₁	D ₂	H	H ₁	H ₂	H ₃	A	S	C ₁	C ₂	S ₁	S ₂	S ₃	S ₄
	d ₁	ℓ	1/T	L	d ₂	ℓ	L																	
15 1/2	22.11	20	1/34	104	Rc 1/2	15	98	15	48	24	13.5	54	25	6	7.5	92	10.5	40	25	31.5	15	3.5	12	
20 3/4	26.13	24	1/34	128	Rc 3/4	17	119	20	60	27	15	62	31	8	10	100	11	45	29	35	19	3.5	12	
25 1	32.16	27	1/34	145	Rc 1	20	135	25	70	28	15	69	38	8	10	100	11	45	29	35	19	3.5	12	
32 1 1/4	38.19	30	1/34	162	Rc 1 1/4	22	150	30	80	34	19	79	43	10	10	121	15	58.5	38	45.5	25	4.5	15	
40 1 1/2	48.21	37	1/37	189	Rc 1 1/2	25	170	40	96	38	23	88	50	10	12	131	18	58.5	38	45.5	25	4.5	15	
50 2	60.25	42	1/37	220	Rc 2	28	198	51	120	40	23	102	56	12	12	159	18	60	40	47	27	4.5	15	